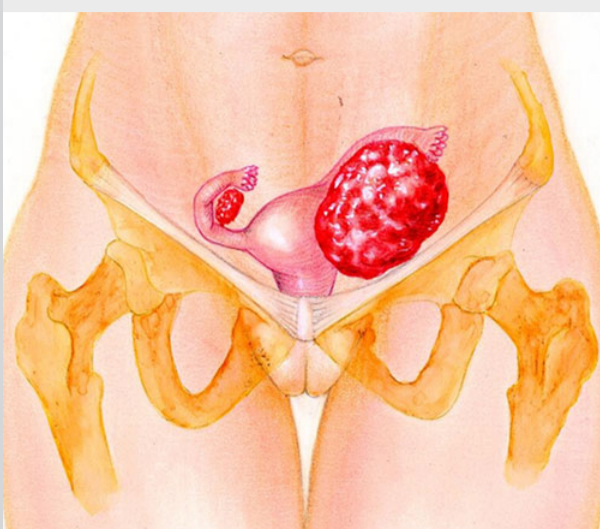


Clinical Physician Update

June 2023

Patient Care



Genetic mutations and ovarian cancer risk

A Mayo Clinic physician assistant in Obstetrics and Gynecology responds to frequent questions from medical professionals about working with patients found to have a hereditary ovarian cancer risk gene.

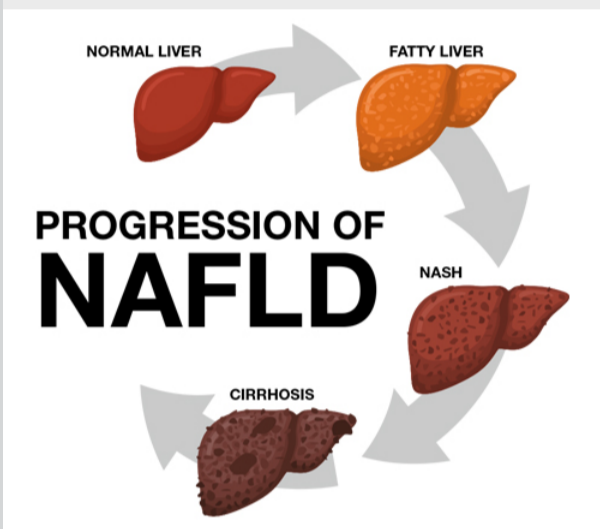
[Learn more](#)



Spinal surgery protocol avoids general anesthesia

Mayo Clinic can perform lumbar fusion, as well as laminectomy and discectomy, with spinal anesthesia. The awake procedures can lessen operating room time and postoperative pain.

[Learn more](#)



The importance of screening for underlying cause of NAFLD in children

Nonalcoholic fatty liver disease (NAFLD) is the primary cause of pediatric liver disease. Obesity is not a factor for all children with NAFLD, which makes it critical to diagnose and treat the root cause.

[Learn more](#)



When a patient arrives with dental trauma

Though patients with dental trauma may not be a daily occurrence at your facility, it's essential to know procedures for managing this situation. A Mayo Clinic oral and maxillofacial surgeon offers tips.

[Learn more](#)

Visit the [Medical Professional Video Center](#) to view specialty videos and Grand Rounds presentations

[Refer a Patient](#)

Research

See all [Family Medicine](#) and [General Internal Medicine](#) [Clinical Trials](#) at Mayo Clinic

Education

Mayo Clinic School of Continuous Professional Development offers [live courses](#), [livestreaming courses](#), [online continuing medical education \(CME\) courses](#) and [podcasts](#) to meet your CME needs.

See all [Family Medicine](#) and [Internal Medicine](#) and [Subspecialties](#) [Continuing Medical Education](#) courses



RISE for Equity: Reflect, Inspire, Strengthen & Empower 2023

Aug. 10-12, 2023
Minneapolis and Livestream

Participants join a national health care dialogue around prioritizing and addressing diversity, equity and inclusion in workforce development and organizational culture while exploring evidence-based solutions and innovative initiatives.

[Register Now](#)

Consults and Referrals

[Phoenix/Scottsdale, Arizona](#)
866-629-6362

[Jacksonville, Florida](#)
800-634-1417

[Rochester, Minnesota](#)
800-533-1564

Resources

[Life-Changing Careers](#)

[Clinical Trials](#)

[Mayo Clinic School of Continuous Professional Development](#)



[Comments?](#)

We're interested in your feedback about this newsletter.

[Pass It On](#)

Invite a friend to subscribe.